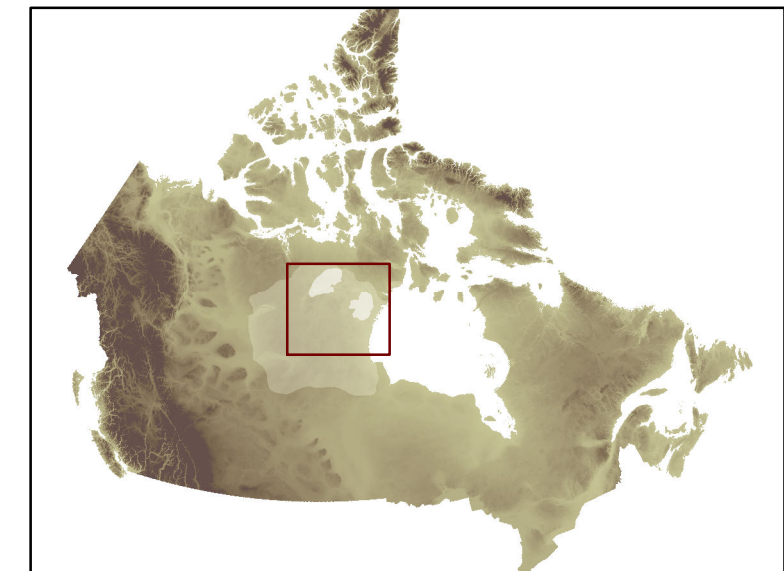
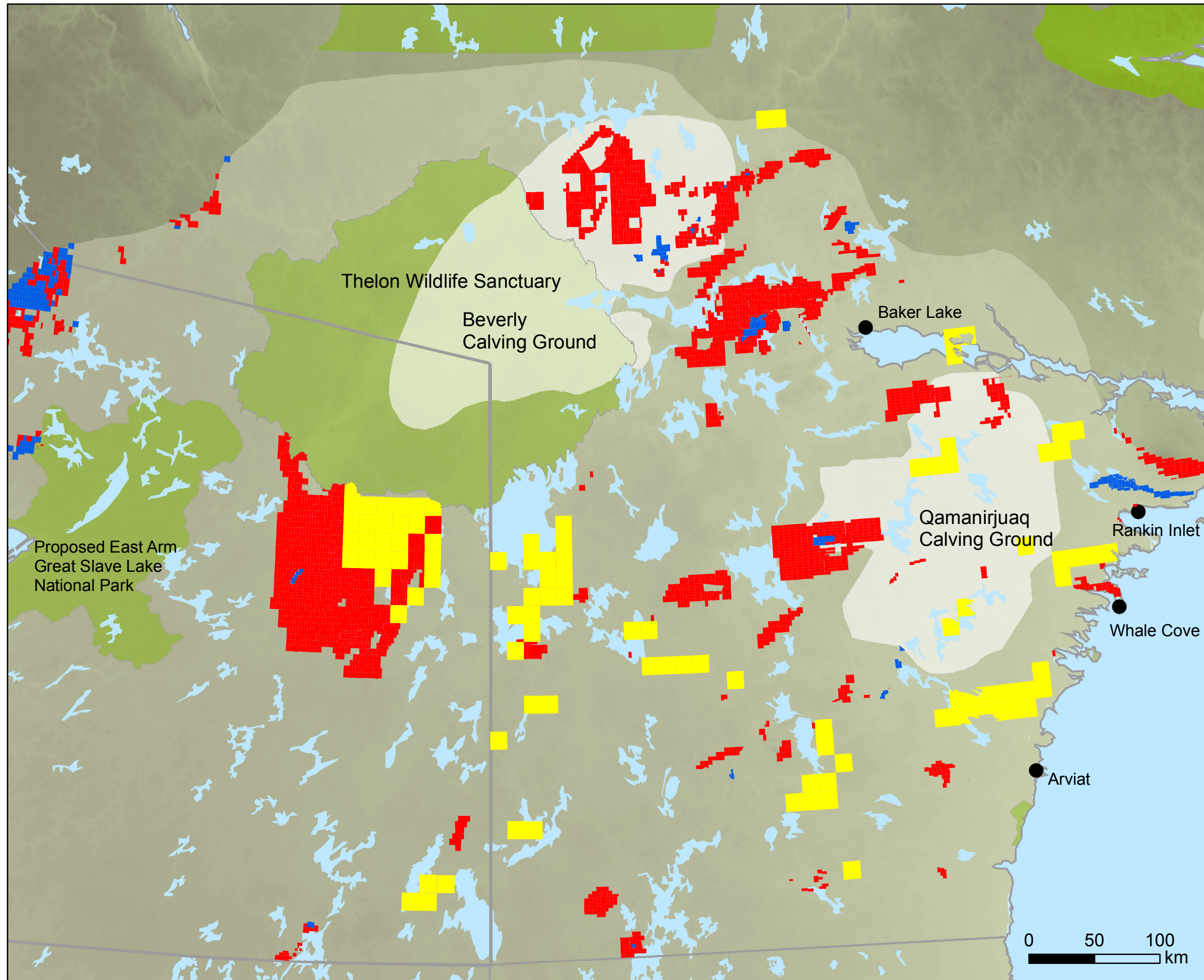


Mineral Tenures on Beverly & Qamanirjuaq Traditional Caribou Calving Grounds (May, 2011)



Mineral Tenures on Beverly & Qamanirjuaq Traditional Calving Grounds

- Mineral Leases
- Mineral Claims
- Prospecting Permits

This map shows all active mineral tenures on the Beverly and Qamanirjuaq caribou range in Nunavut and eastern Northwest Territories

- Protected Area
- Beverly & Qamanirjuaq Traditional Calving Grounds
- Beverly & Qamanirjuaq Caribou Range

Produced by World Wildlife Fund Canada for Beverly and Qamanirjuaq Caribou Management Board, May 2011.
 Data Source: Mineral Tenures - Department of Indian Affairs and Northern Development (DIAND), 05/05/11.
 DIAND accepts no responsibility for any errors, inaccuracies and/or omissions in this data.
 Caribou range and calving grounds boundaries - Beverly and Qamanirjuaq Caribou Management Board;
 Protected Areas - Governments of Northwest Territories and Nunavut; Communities - Atlas of Canada.
 Projection: Lambert Conformal Conic, NAD83.
 © 1986 Panda symbol WWF-World Wide Fund For Nature (also known as World Wildlife Fund)
 © "WWF" is a WWF Registered Trademark