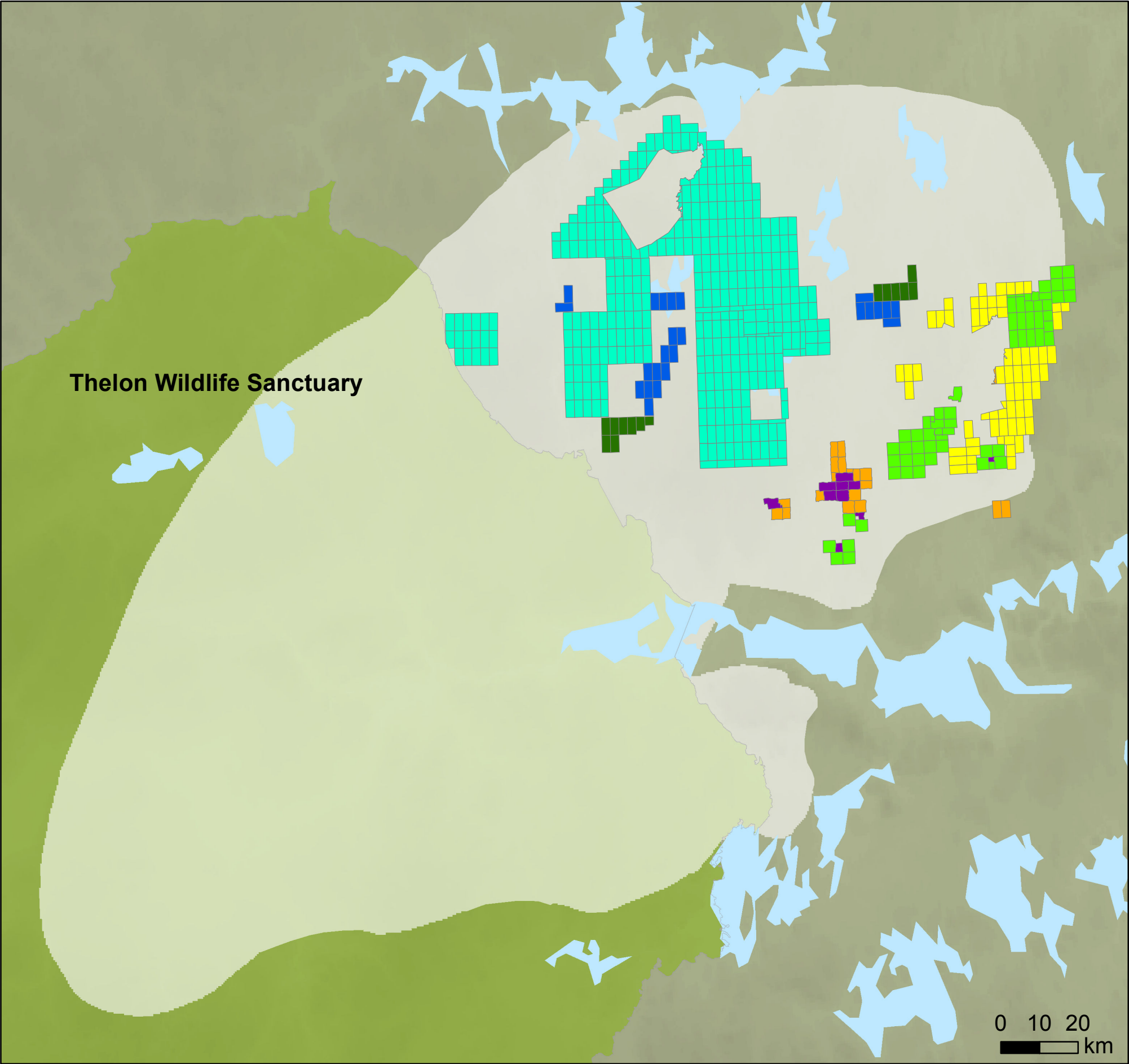


Mineral Tenures on Beverly Caribou Traditional Calving Ground (May, 2011)



Owners of Mineral Tenures on Beverly Traditional Calving Ground

- Bayswater Uranium Corp.
- Cameco Corp.
- McMillan, Ronald
- Ruby Hill Exploration Inc.
- Strongbow Exploration Inc.
- Titan Uranium Inc.
- UraVan Minerals Inc.

This map shows active mineral tenures on the calving ground only; other mineral tenures exist in the region that are not displayed.

- Protected Area
- Beverly Traditional Calving Ground

Produced by WWF-Canada for Beverly and Qamanirjuaq Caribou Management Board, May 2011.
 Data Source: Mineral Tenures - Department of Indian Affairs and Northern Development (DIAND), 04/05/11.
 DIAND accepts no responsibility for any errors, inaccuracies and/or omissions in this data.
 Caribou range and calving grounds boundaries - Beverly and Qamanirjuaq Caribou Management Board;
 Protected Areas - Governments of Northwest Territories and Nunavut; Communities - Atlas of Canada.
 Projection: Lambert Conformal Conic, NAD83.
 © 1986 Panda symbol WWF-World Wide Fund For Nature (also known as World Wildlife Fund)
 © "WWF" is a WWF Registered Trademark

