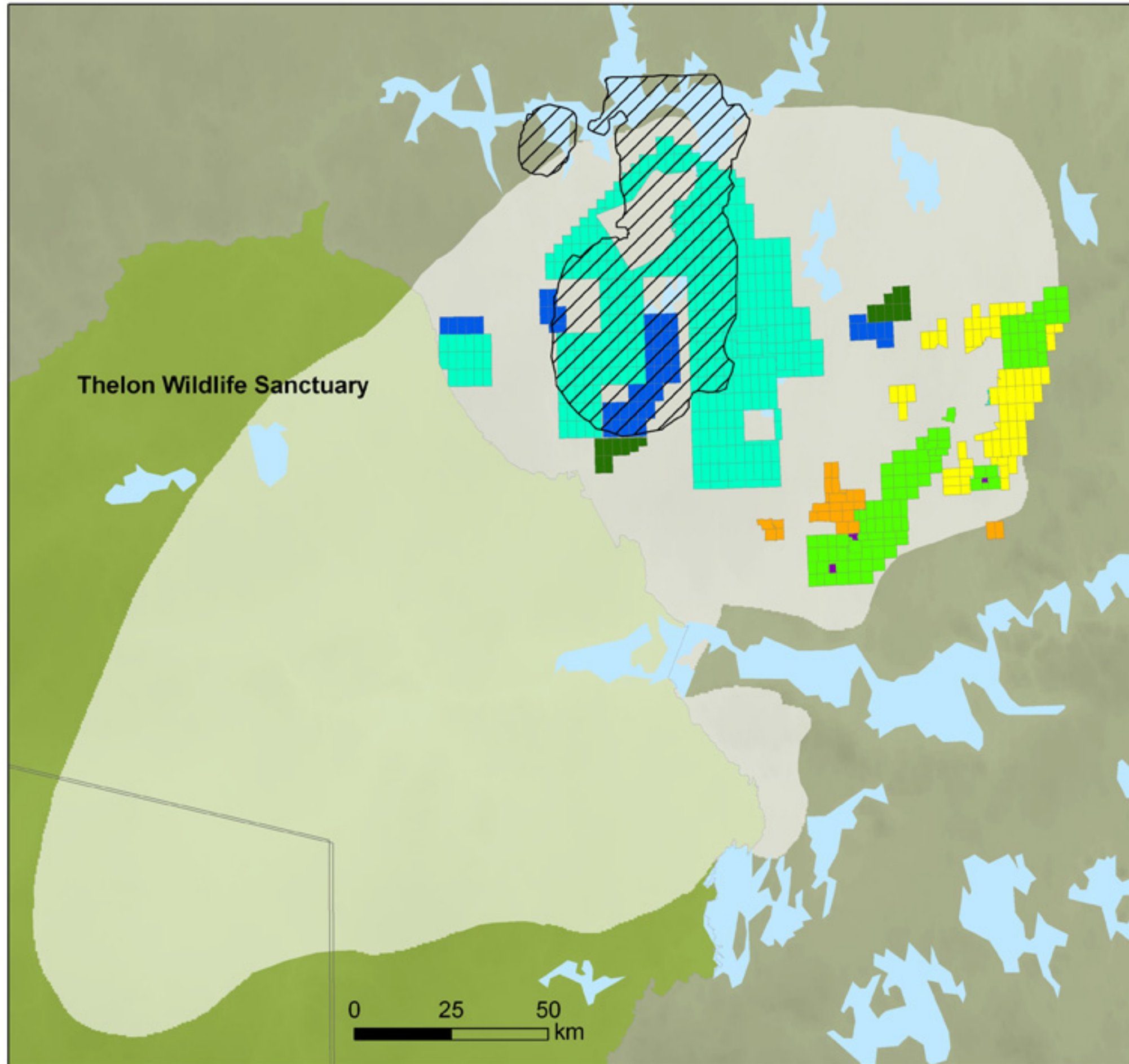









# Mineral Tenures on Beverly Caribou Calving Ground (May, 2010)



## Owners of Mineral Tenures on Beverly Calving Ground

- |  |  |
|--|--|
|  Bayswater Uranium Corp. |  Ruby Hill Exploration Inc.  |
|  Cameco Corp.           |  Strongbow Exploration Inc. |
|  McMillan, Ronald       |  Titan Uranium Inc.         |
|  |  Uravan Minerals Inc.       |

This map only shows active mineral tenures on the calving ground; other mineral tenures exist in the region that are not displayed.

- |  |  |
|--|--|
|  Observed Extent of Calving 2007-2008 |  Beverly Traditional Calving Ground |
|  Protected Area                       |  |

Produced by WWF-Canada for Beverly and Gamanirjuaq Caribou Management Board, May 2010.  
 Data Source: Mineral Tenures - Department of Indian Affairs and Northern Development (DIAND);  
 CANAD accepts no responsibility for any errors, inaccuracies and/or omissions in this data.  
 Observed extent of calving, Beverly herd, 2007-2008 - Digitized from a map originally created by Deborah Johnson,  
 Department of Environment and Natural Resources, GNWT.  
 Caribou range and traditional calving grounds boundaries - Beverly and Gamanirjuaq Caribou Management Board;  
 Protected Areas - Governments of Northwest Territories and Nunavut; Communities - Atlas of Canada.  
 Projection: Lambert Conformal Conic, NAD83.  
 © 1986 Panda symbol WWF-World Wide Fund For Nature (also known as World Wildlife Fund)  
 © WWF is a WWF Registered Trademark

